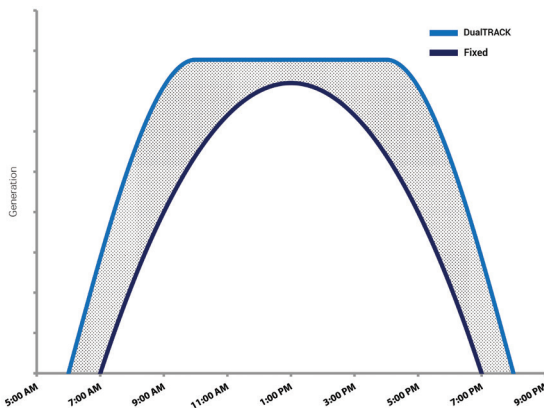


We track at any scale.
Utility-scale models also available

More power to you.

DualTrack 24 captures the most optimal energy for your home, thanks to our patented Real-Time Sensors (RTS) that guide our systems to the maximum point of sunlight throughout the day. This results in **30-40 percent more** power production than conventional fixed arrays.

Rating chart using a sunny day



Key features

Reliability

Contains self-healing Magnesium Alloy Coated (MAC) steel, a strong alloy that is 5-10 times stronger than galvanized steel.

Utilizes patented Real-Time Sensors for ultimate tracking, allowing **no wasted energy** during cloudy days - unlike conventional GPS input tracking systems that follow their pre-programmed path.

We provide company support during the lifetime of the tracker (Operation & Troubleshooting)

Installation Flexibility

Simple electrical Plug N' Play connection with the use of RTS technology. No pre-programming or skilled technician is required.

Can be installed on any terrain.

Flexible system that can accommodate any commercially available solar module.

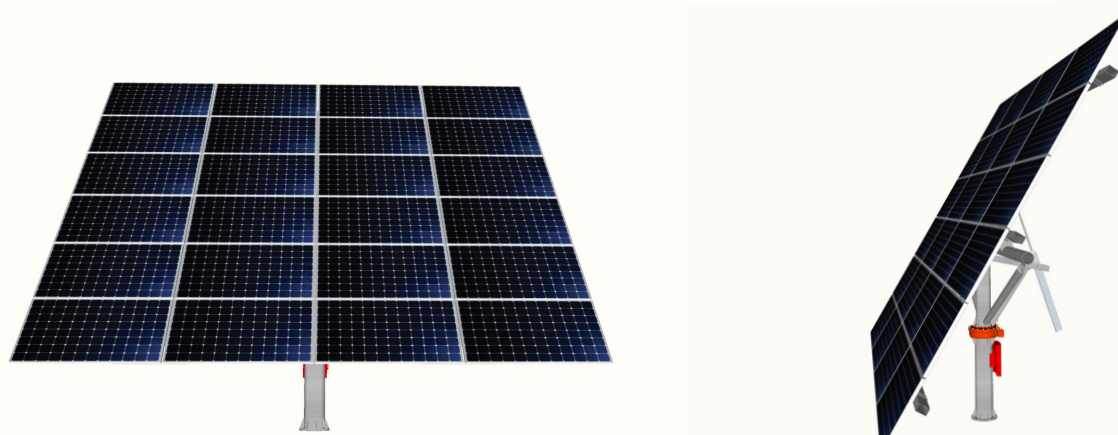
Low Maintenance

Low voltage DC motors which require low maintenance and minimum downtime.

No skilled technician is required.

Learn more
about
**Real-Time
Sensing**





Tracker Specifications

Tracking Type	Dual Axis
Model	DualTrack 24
Module Area (Max)*	48m ² [24 modules 72-cell]
System Weight	1,500kg, without modules & foundation
Tracking Axis	Dual Axis: azimuth & vertical
Tracking Range of Motion	Azimuth: -120° to +120° Vertical: 0° to 60°
Azimuth Rotation	Slew drive
Vertical Tilt	Linear actuator
Power Supply to Controller	100-240VAC / 50 ~ 60Hz
Materials	Magnesium Alloy Coated / Hot-dip Galvanized steel
Solar Tracking Method	Real-Time Solar Sensor
Max Wind Speed	Standard 47m/s (105MPH)
Safety Mode (Automatic Horizontal)	Wind mode, Less than 3,000 lux
Safety Mode (Tilted Position)	Snow Mode
Temperature Range	-25 to 55°C (-13 to 131°F)

The above specifications could vary according to local conditions

**Module Area (Max) - Optional 60 cell modules*

Available for Residential, Commercial & Industrial use.

Sun Action Trackers

3660 Thousand Oaks, Suite 316 | San Antonio, Texas 78247

Main:844-366-7525

Email: info@sat-energy.com

www.sat-energy.com

